

VIRAGE 88

88m luxury motor yacht



FINCANTIERI
YACHTS

TECHNOLOGY OF BEAUTY

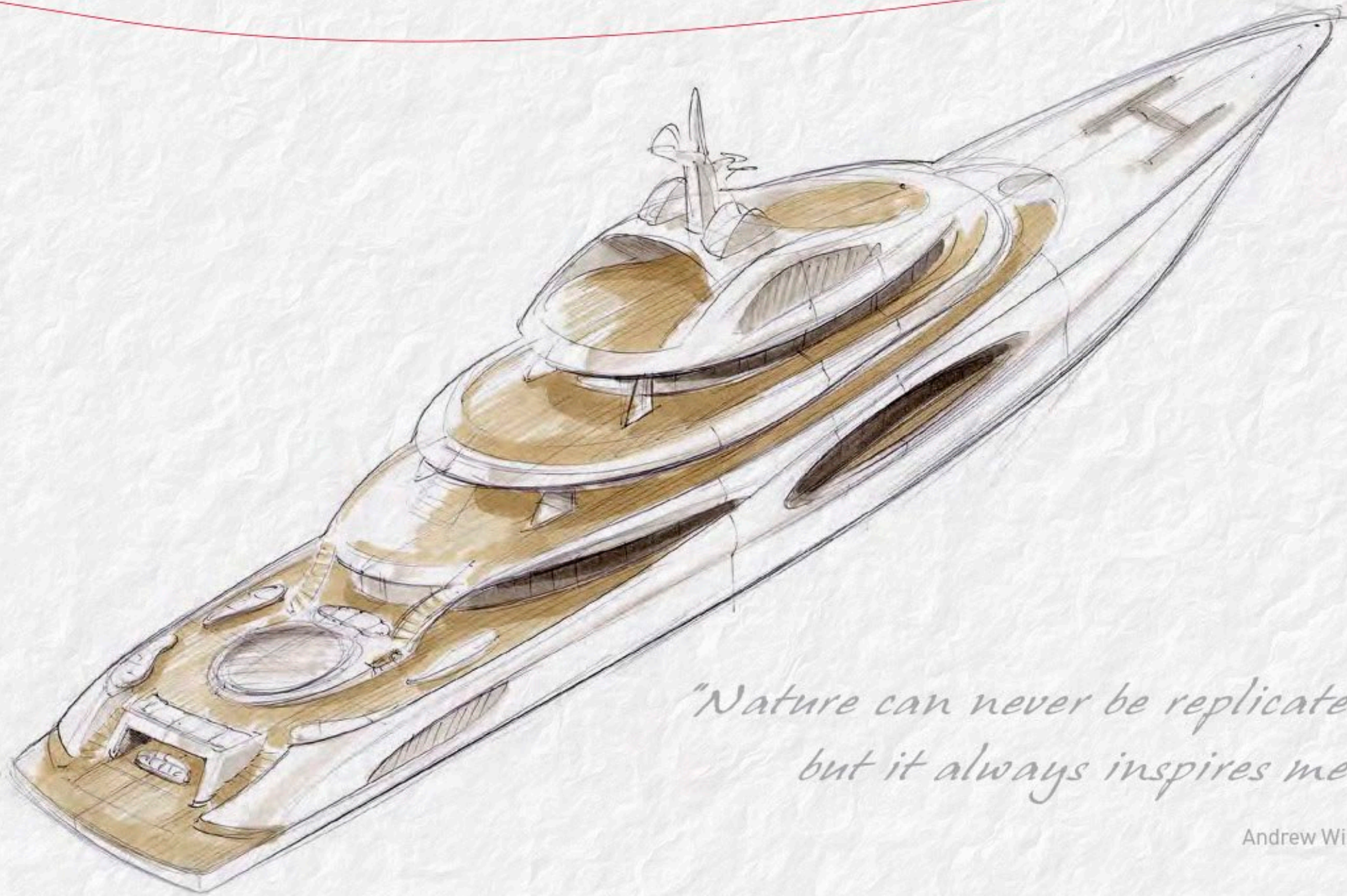


FINCANTIERI
YACHTS

TECHNOLOGY OF BEAUTY



VIRAGE 88 - 88m LUXURY MOTOR YACHT - designed by ANDREW WINCH specially for FINCANTIERI YACHTS



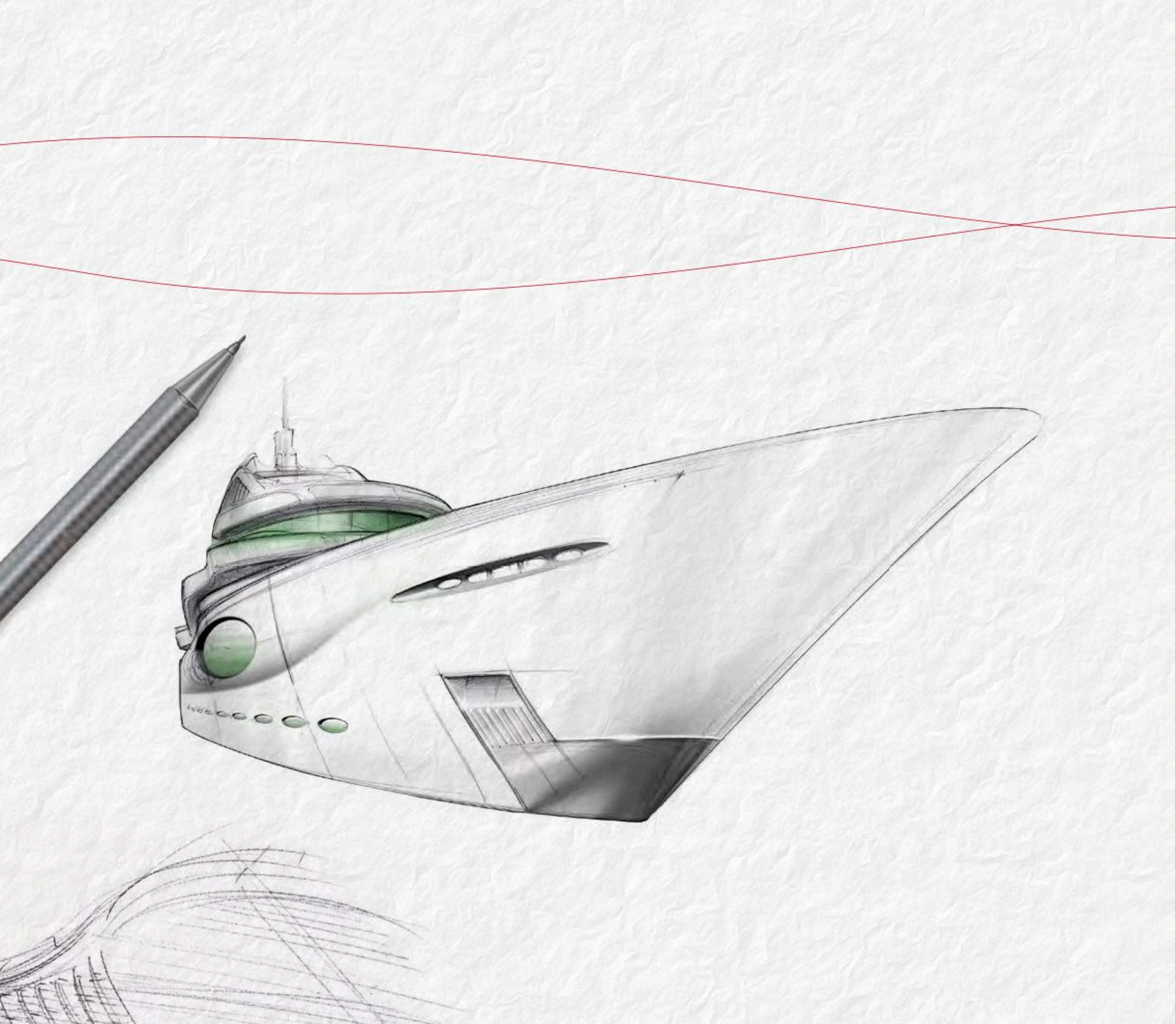
*"Nature can never be replicated,
but it always inspires me."*

Andrew Winch

FINCANTIERI YACHTS TECHNOLOGY OF BEAUTY

Fincantieri yachts are products of outstanding quality. It's the final result of a special synergy of advanced technical, design and construction capabilities, perfected over more than two centuries of experience building all types of oceangoing vessels. We infuse into every yacht the passion for quality and a keen eye for detail, stemming from the experience of generations of skilled engineers, craftsmen and leaders that are the Fincantieri team. They operate together in sophisticated yards like Muggiano supported by the world's finest yachting subcontractors. Vessels are designed and constructed with precision under the watchful eye of skilled project managers, combining the best design and production techniques with managerial expertise at the disposal of discerning owners who seek excellence, in an open and proactive interaction that is pleasant, flawless and rewarding.





LEADING IDEAS OF THE PROJECT

We have created the Virage 88 as the yacht of the future. The elegant combination of flowing lines and soft shapes will create a seamless yacht sculpture – we design our projects as floating works of art. The Virage 88 is a yacht being built by artisans: the latest construction techniques are being employed to ensure her unique profile and futuristic detailing are perfectly crafted.

Synonymous with her name, she emulates the soft rolling curves of the waves, while providing a relaxed and calming environment for guests to enjoy.



Andrew Winch
Design Director

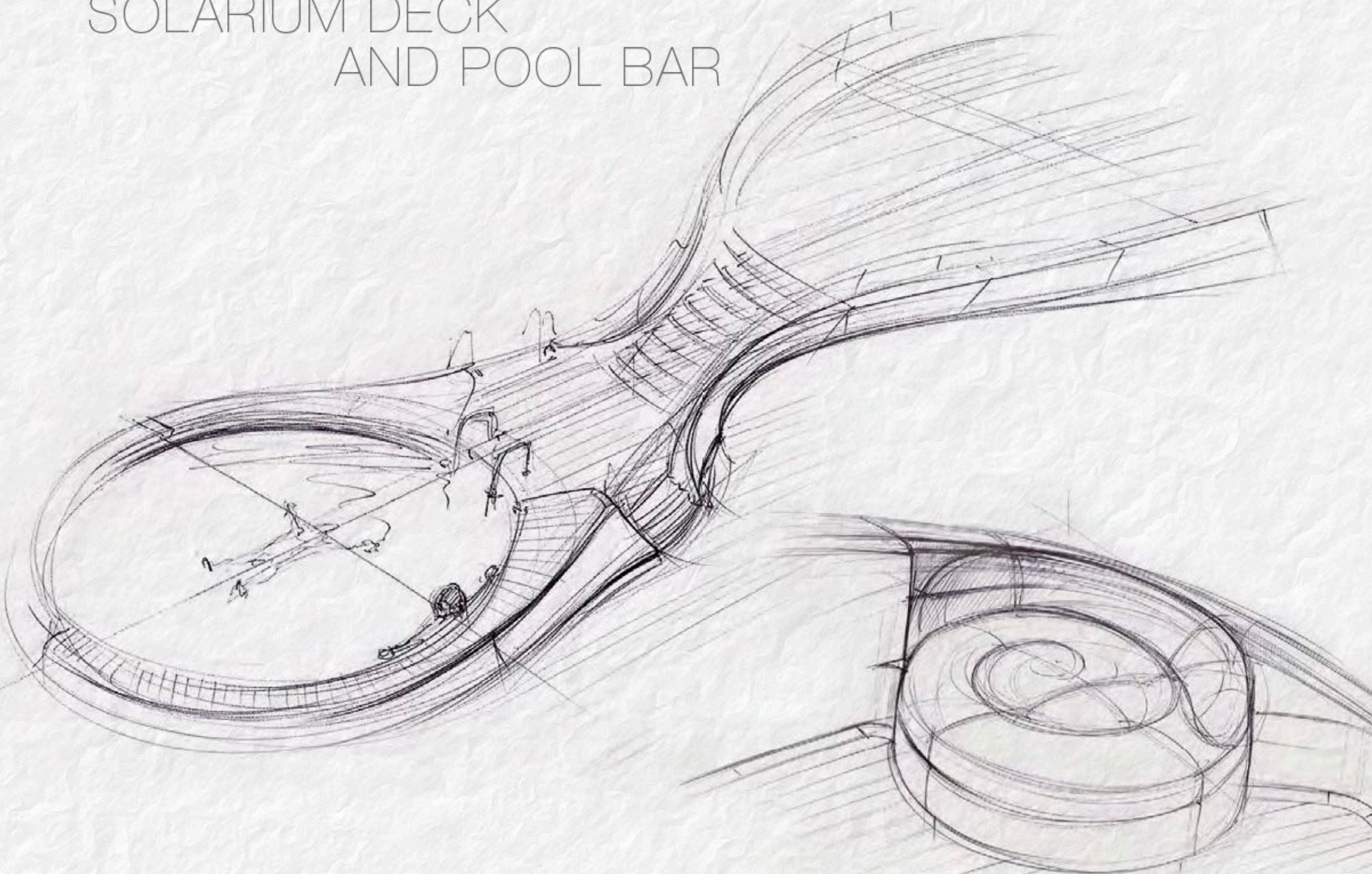


ANDREW WINCH DESIGNS:

Founded in 1986, Andrew Winch Designs has been a leading studio in the specialist yacht design industry for the past twenty five years. Dedicated to taking the individual dreams of our clients and bringing them to life, Andrew Winch Designs strives to achieve beauty afloat, balancing line and form. What underpins all of our work is quality, attention to detail and the enthusiasm of our team.

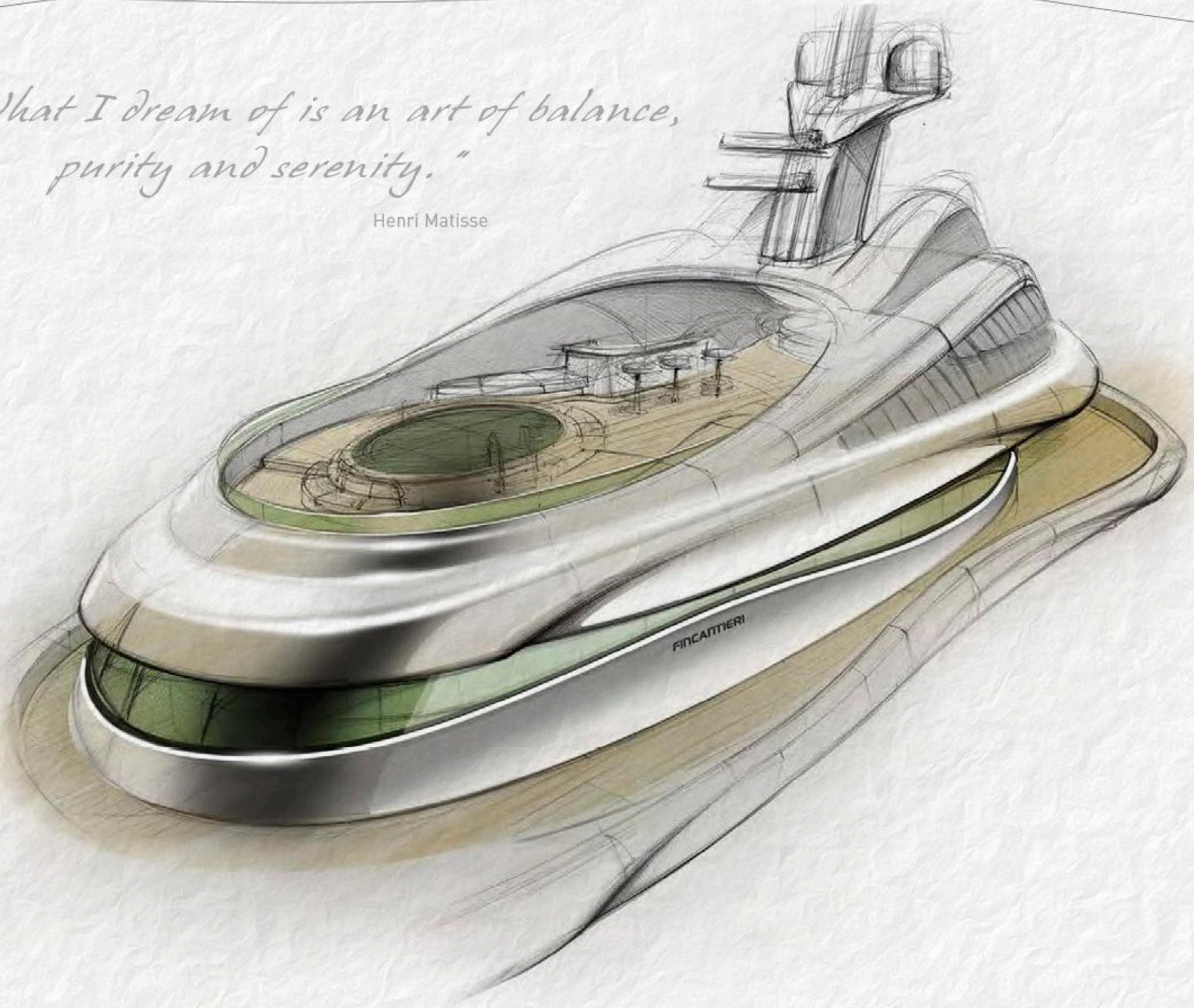
Our company is comprised of highly gifted individuals who are passionate about design. From the drawing board through to the delivery of our projects, our talented team of 40 colleagues work together to ensure that on completion our projects are a true work of art.

SOLARIUM DECK
AND POOL BAR



*"What I dream of is an art of balance,
purity and serenity."*

Henri Matisse





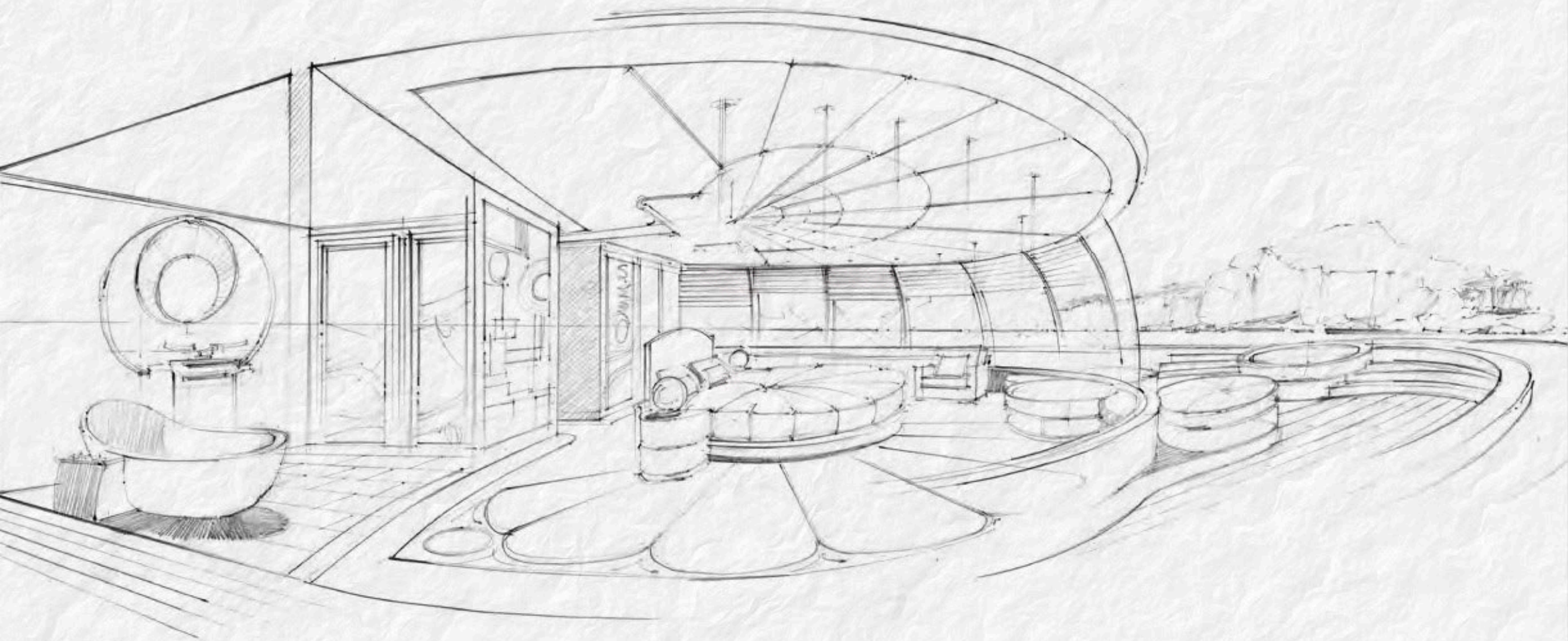
VIRAGE 88

88m luxury motor yacht

Length Overall	88 m
Max Beam	14.5 m
Max Draught	3.75 m
Gross Tonnage	Abt. 2,600 t
No. of Decks	6
Owner and Guests	12+2
Suites for Owner and Guests	7
Captain, Crew and Staff	29

Diesel Engine Power	2 x 2,100 ÷ 2,500 kW
Propellers	2 x Controllable Pitch
Cruising Speed (85% max. power)	17 kn
Maximum Speed (100% max. power)	18 kn
Nautical Range at 12kn	Abt. 6,000 nm
Bow Thrusters	1x300 kW
Stabilizers	2 pair, non retractable, zero speed
Max. Tender Length	10 m

THE ULTIMATE MASTER SUITE



The Owner's Master Suite has a unique wrap-around balcony, while the VIP suite is just as harmonious thanks to a private aft balcony.

Gone are the days when a yacht appeared hard-edged and brutal; the Winch Virage will be beautifully sculpted to flow both inside and out.

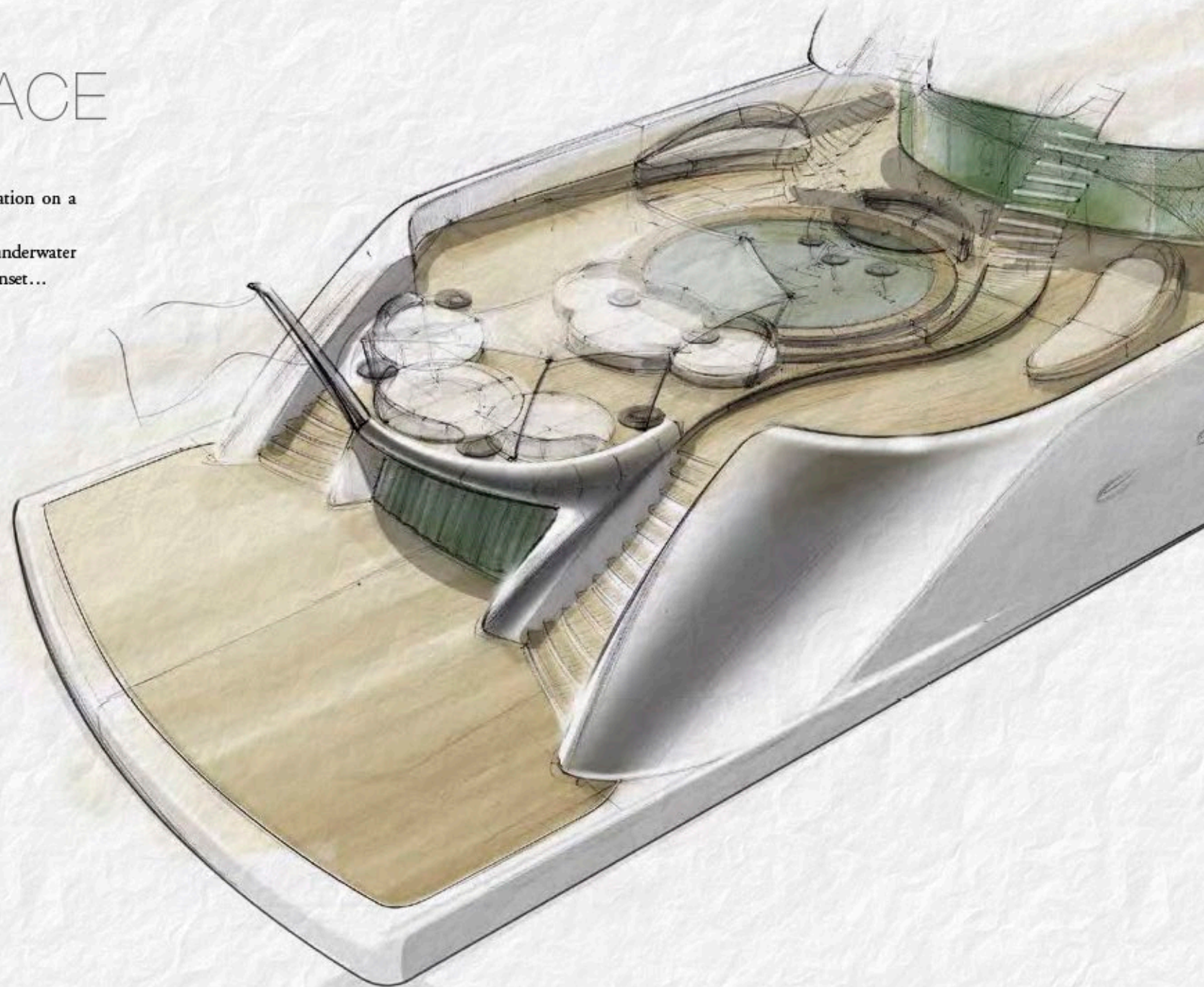
*You see things; and you say "Why?"
But I dream things that never were;
and I say "Why not?"*

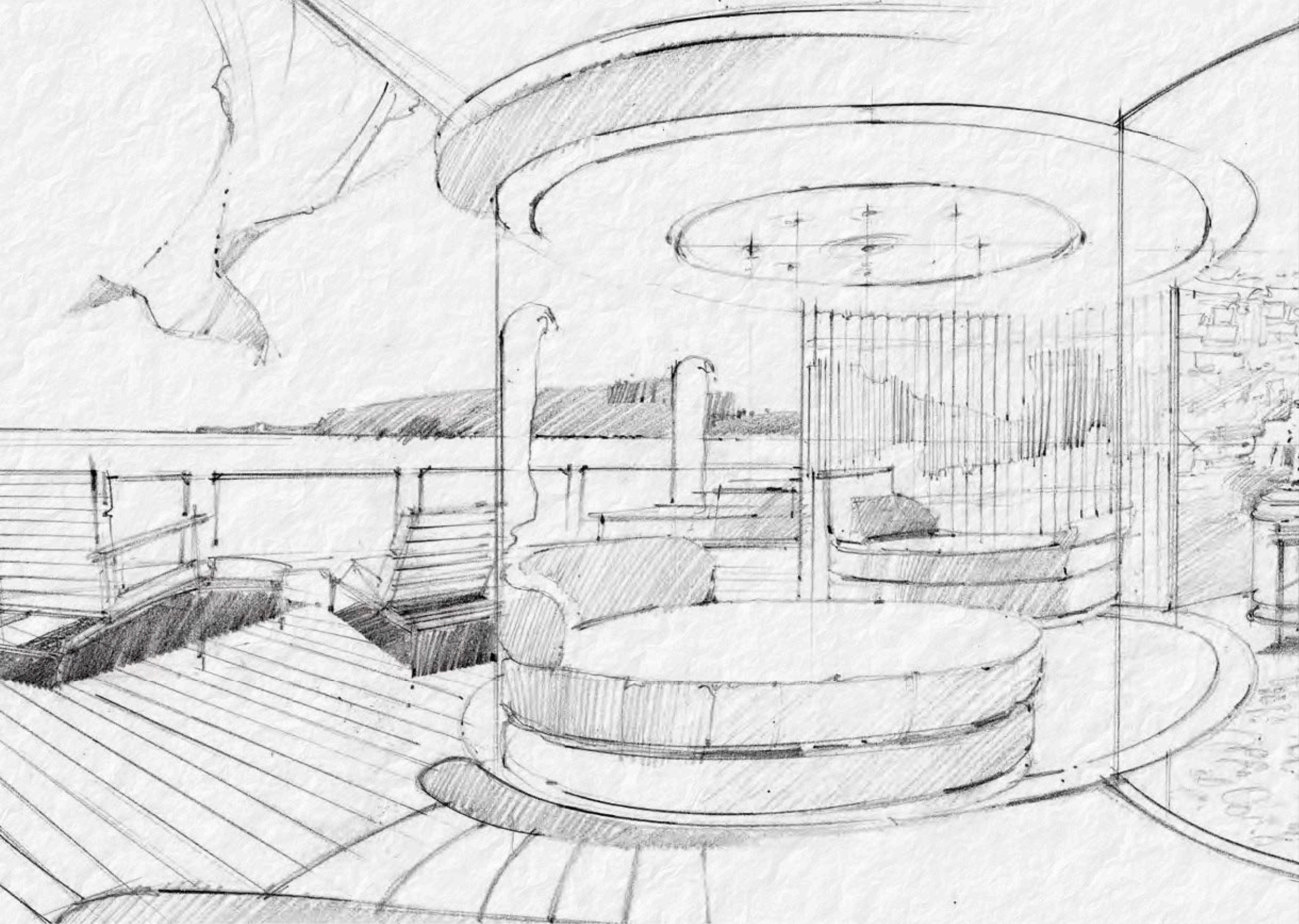
George Bernard Shaw

POOL TERRACE

A circular pool, surrounded by islands for relaxation on a cantilevered balcony over the transom beach.

Relaxing in the pool, one can float along to the underwater bar seats to enjoy a Mojito whilst watching the sunset...





BEACH CLUB, GYM & SPA



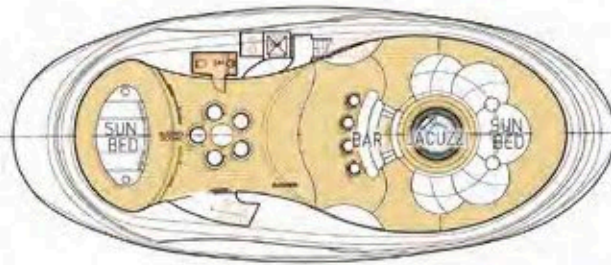
From the Beach Club on the transom to the vast panoramic windows of the four Guest Suites, those onboard are continuously involved with the sea, whether they are on the deck or indoors.

VIRAGE 88

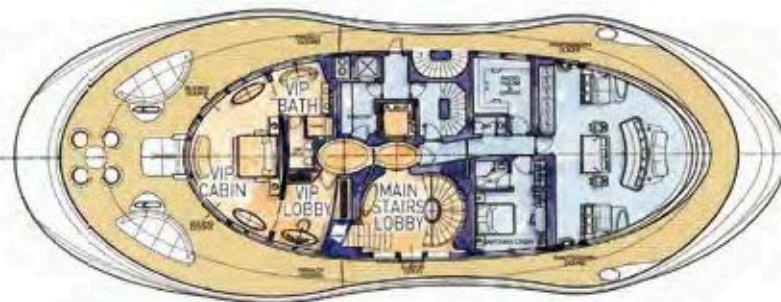
88m luxury motor yacht



PROFILE



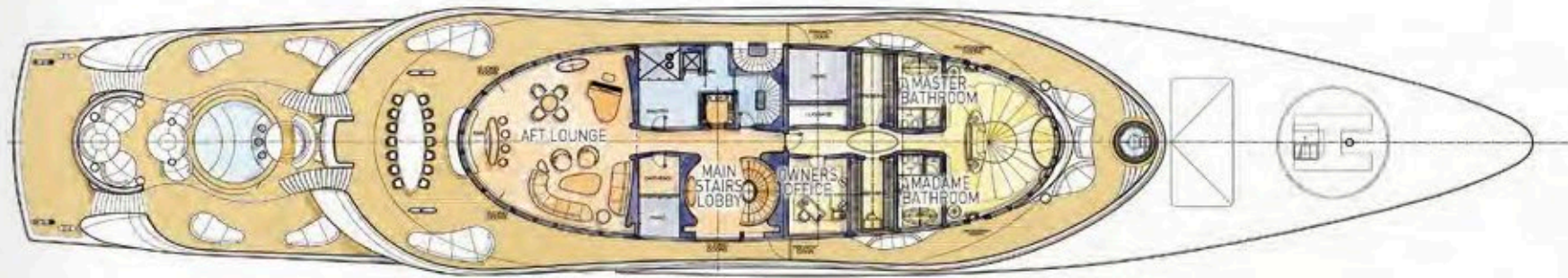
SUN DECK



BRIDGE DECK



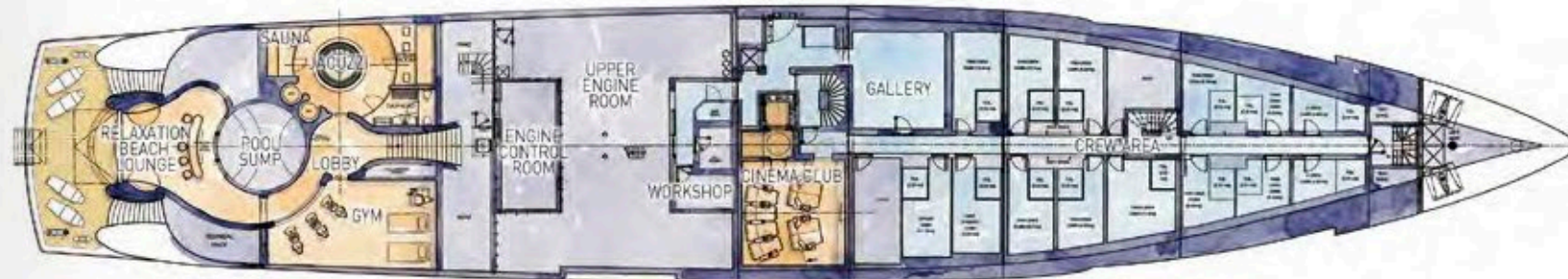
ANDREW WINCH DESIGNS



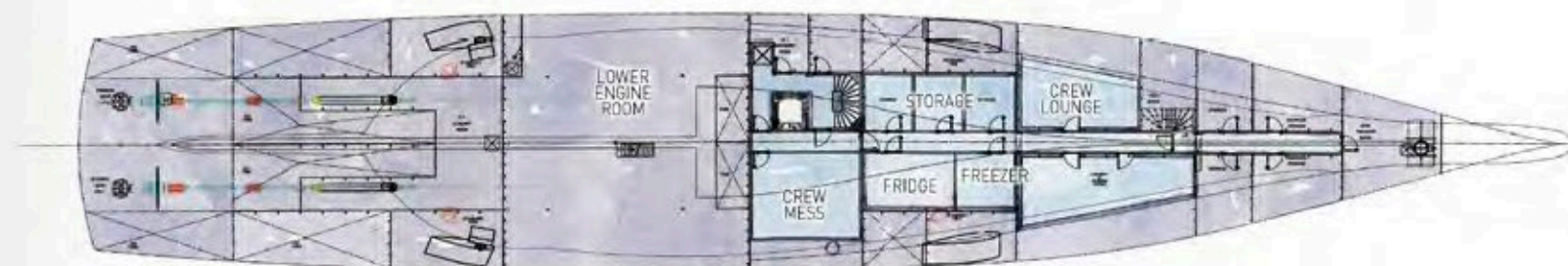
UPPER DECK



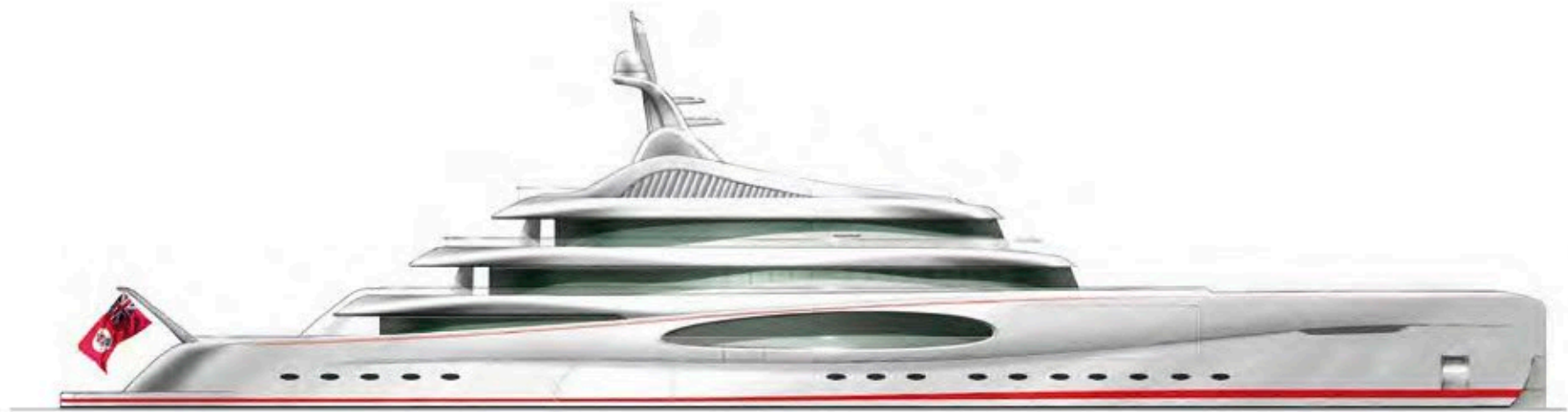
MAIN DECK



LOWER DECK



FALSE DECK





FINCANTIERI
YACHTS

Viale S. Bartolomeo, 446
19126 Muggiano, La Spezia - Italy
Phone +39 0187 543238
Fax +39 0187 543239
E-mail: fincantieriyachts@fincantieri.it
fincantieriyachts.com



FINCANTIERI
YACHTS